

## STARTERS

### Calamari Rings

seasoned and dipped in a light batter then deep-fried until crispy. Served with a sweet chillie sauce.

**R55**



### Spring Rolls

carrots and cabbage stir-fried, then rolled in a pastry and deep-fried until crisp. Served with sweet chillie sauce. (2PC)

**VEG - R22**

**CHICKEN - R33**

**SEAFOOD MIX - R45**



### Tempura Prawn

prawns seasoned and dipped in a light batter then deep-fried until crispy. Served with a sweet chillie sauce.

**R55**



### Asian Schnitzel

sliced chicken breasts coated in flour and deep-fried. Served with a side order of pickled veg and sweet chillie sauce.

**R55**



### Fried Tofu

cubed tofu, deep-fried, served with pickled veg and a garlic teriyaki sauce.

**R45**



## OUT THE WOK

**Chilli Bean** - a spicy stir-fry with green peppers, carrots and onions done in our very own chilli bean sauce, with a light sweet twist to the flavour.

**VEG - R79**

**BEEF - R99**

**CHICKEN - R95**

**PRAWN - R135**



**Garlic & Basil** - a saucy stir-fry done in a combination of sauces with garlic basil, onion, mushrooms and finely chopped chilli.

**VEG - R79**

**BEEF - R99**

**CHICKEN - R95**



### Soya Black Bean

a unique tasting stir-fry with carrots, peppers & onion. Done in a soya black bean sauce with fresh ginger.

**VEG - R79**

**BEEF - R99**

**CHICKEN - R95**

**CALAMARI - R115**



### Bamboo Stir-Fry

a sesame oil stir-fry with secret sauces and cooking wine. Done with baby marrow, fresh ginger, garlic, basil, carrots and onions.

**VEG - R79**

**CHICKEN - R115**

**CALAMARI - R115**



### Sweet 'n Sour

a saucy stir-fry with green peppers, onions and carrots done in our very own fruity sweet 'n sour sauce which is then topped with pineapples.

**CHICKEN - R95**

**PRAWN - R135**





# STIR-FRY



## Stir-Fried Noodles

stir-fried egg noodle with carrots, onion, cabbage and spring onion.

extra chicken - R40  
extra beef - R50  
extra prawns - R60

**PLAIN NOODLES** - R42  
**VEG** - R66  
**CHICKEN** - R89  
**BEEF** - R96  
**PRAWN** - R135



## Egg-Fried Rice

stir-fried rice with eggs, spring onion, carrots, onion and green beans. Served with a salad.

**PLAIN FRIED RICE** - R42  
**VEG** - R66  
**CHICKEN** - R89  
**BEEF** - R96  
**PRAWN** - R135

extra egg - R10  
extra chicken - R40  
extra beef - R50  
extra prawns - R60

# SUSHI

HALF PRICE SUSHI - All Day Everyday

UMHLANGA, SHOP 78,  
1/3 CHARTWELL DRIVE

CELL: 071 791 3891

TEL: 031 561 2705

CELL: 071 135 5553

[www.bamboosushi.co.za](http://www.bamboosushi.co.za)  
[info@bamboosushi.co.za](mailto:info@bamboosushi.co.za)



Available for Delivery  
Tel: 031-584 7777

© 2014 Bamboo

# SUSHI

## California Rolls

Veg	- R44
Crab	- R44
Salmon	- R56
Tuna	- R56
Prawn	- R56
Salmon Rainbow	- R72

## Makis

Cucumber	- R36
Peach	- R36
Salmon	- R56
Tuna	- R56
Prawn	- R56
Avo	- R36
Prawn Tempura	- R72

## Sashimi & Roses

Salmon Roses	- R78
Tuna Roses	- R78
Salmon Sashimi	- R98
Tuna Sashimi	- R98

## Fashion Sandwich

Veg	- R56
Salmon	- R72
Tuna	- R72
Prawn	- R72

## Towers

Salmon	- R56
Prawn	- R56



# SUSHI

## Nigiri

Calamari	- R36
Fish Tempura	- R36
Salmon	- R44
Tuna	- R44
Prawn	- R44

## Hand Rolls

Cucumber	Sea.
Veg	- R54 -R44
Crab	- R54 -R44
Salmon	- R74 -R64
Tuna	- R74 -R64
Prawn	- R74 -R64
Tempura Prawn	- R82 -R72

## Bamboo Roll

Veg	- R56
Salmon	- R72
Tuna	- R72
Prawn	- R72
Tempura Prawn	- R72
Pineapple Prawn	- R72

## Bean Curd

Avo	- R44
Salmon and Avo	- R56
Chilli Prawn & Avo	- R56

## Chef's Special

Salmon Brolee Nigiri	- R56
Chilli Prawn Nigiri	- R56
Sweeten Prawn Roll(4pc)	-R76
Deep Fried Sushi(6pc)	-R76
(options: Salmon, Tuna, Prawn)	



# COMBOS

# FUNCTION PLATTERS

## Salmon Combos

- Salmon Roll (8PC)
- Salmon Rainbow Roll (4PC)
- Salmon Fashion Sandwich (4PC)
- Salmon Nigiri (2PC)
- Salmon Roses (4PC)
- Salmon Sashimi (4PC)

**-R238**



26 PC

## Albert Combo

- Deep Fry Sushi Tuna (6PC)
- Bamboo Roll (4PC)
- Sweet Prawn Roll (4PC)
- Salmon Rose (4PC)
- Salmon Brulee (2PC)
- Chilli Prawn Nigiri (2PC)

**-R203**



26 PC

## Veg Combo

- Veg Bamboo Roll (4PC)
- Avo Maki (6PC)
- Bean Curd (2PC)

**-R68**



12 PC

## Royal Rose

- Salmon Rose (4PC)
- Salmon Rainbow Roll (4PC)
- Bamboo Roll (4PC)

**-R111**



12 PC

## Salmon King

- Salmon Bamboo (4PC)
- Salmon Rose (2PC)
- Salmon Sashimi (2PC)
- Salmon Fashion Sandwich (2PC)

**-R98**



10 PC



64 PC

## Standard Platter - 64 PIECES FOR R398

- Peach Maki (6PC) - Cucumber Maki (6PC) - Tuna Maki (6PC)
- Salmon Maki (6PC) - Salmon Roll (8PC) - Crabstick Roll (8PC)
- Prawn Roll (8PC) - Salmon Rainbow Roll (8PC) - Tuna Roll (4PC)
- Avo Bean Curd (2PC) - Chilli Prawn Bean Curd (2PC)



60 PC

## Deluxe Platter - 60 PIECES FOR R561

- Sashimi (4PC) - Tuna Sashimi (4PC) - Salmon Roses (4PC)
- Tempura Prawn Bamboo Roll (8PC) - Salmon Rainbow Roll (8PC)
- Crabstick Rainbow Roll (4PC) - Salmon Roll (4PC)
- Prawn Rainbow Roll (4PC) - Prawn Roll (4PC) - Prawn Nigiri (6PC)
- Tempura Prawn Maki (6PC) - Avo Bean Curd (2PC)
- Chilli Prawn Bean Curd (2PC)



74 PC

## Salmon Deluxe Platter - 74 PIECES FOR R626

- Salmon Sashimi (8PC) - Salmon Roses (8PC) - Salmon Roll (16PC)
- Salmon Maki (12PC) - Salmon Fashion Sandwich (8PC)
- Salmon Nigiri (6PC) - Salmon Rainbow Roll (16PC)

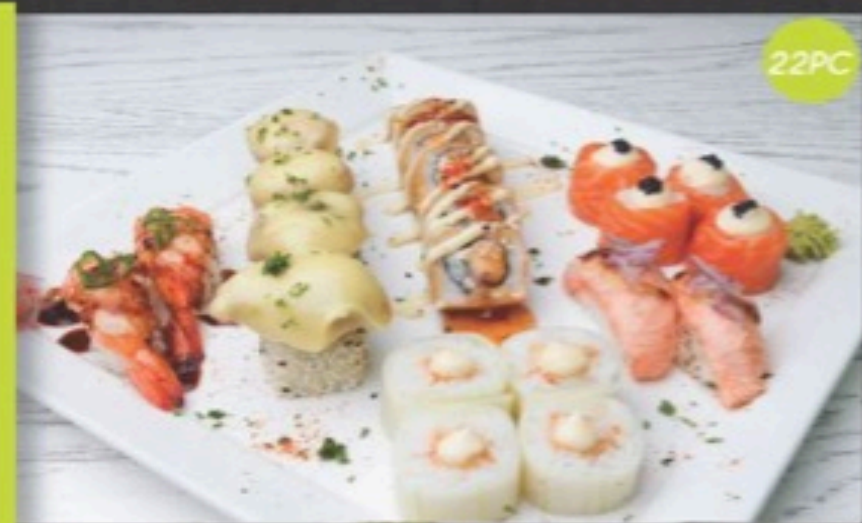
# PLATTERS



Salmon Roll 8pc  
Salmon Rainbow roll 4pc  
Salmon fashion sandwich 4pc  
Salmon nigiri 2pc  
Salmon Roses 4pc  
Salmon sashimi 4pc

R238-

## SALMON PLATTER



Deep fry sushi prawn 6pcs  
Bamboo roll 4 pc  
Sweet prawn roll 4 pc  
Salmon rose 4 pc  
Salmon brulee 2 pc  
Chili prawn nigiri 2 pc

R203-

## ALBERT PLATTER

