

COCKTAILS

SHOTS

CHOCOLATE CAKE R30
Vodka, Frangelico, Stroh Rum & an orange wedge

CARAMELLO BEAR R30
Bar-one Vodka & Caramel Vodka with Milk Tart

CARAMEL VODKA R30
Jakes Caramel Vodka

ABSOLUT BAR-ONE R30
Jakes Bar-One Chocolate Vodka

MILK TART R25
Mainstay & Condensed Milk

CLASSIC COCKTAILS

BOS BABY R75
Vodka, sprig of mint, squeeze of orange,
Monin Honey, dash of lime, BOS Peach

REDEMPTION SUNSET R75
Redemption Gold rum, squeeze and drop of lime,
ginger-ale, ice

WATERMELON BASIL ECLIPSE R75
Vodka, Watermelon & Strawberry Liqueur,
Cranberry Juice & fresh basil

APEROL SPRITZ R75
Bottega Prosecco Brut & Aperol with a dash
of soda & lots of ice

MOJITO R75
Rum, fresh mint leaves, lime, Mojito Syrup & Lemonade

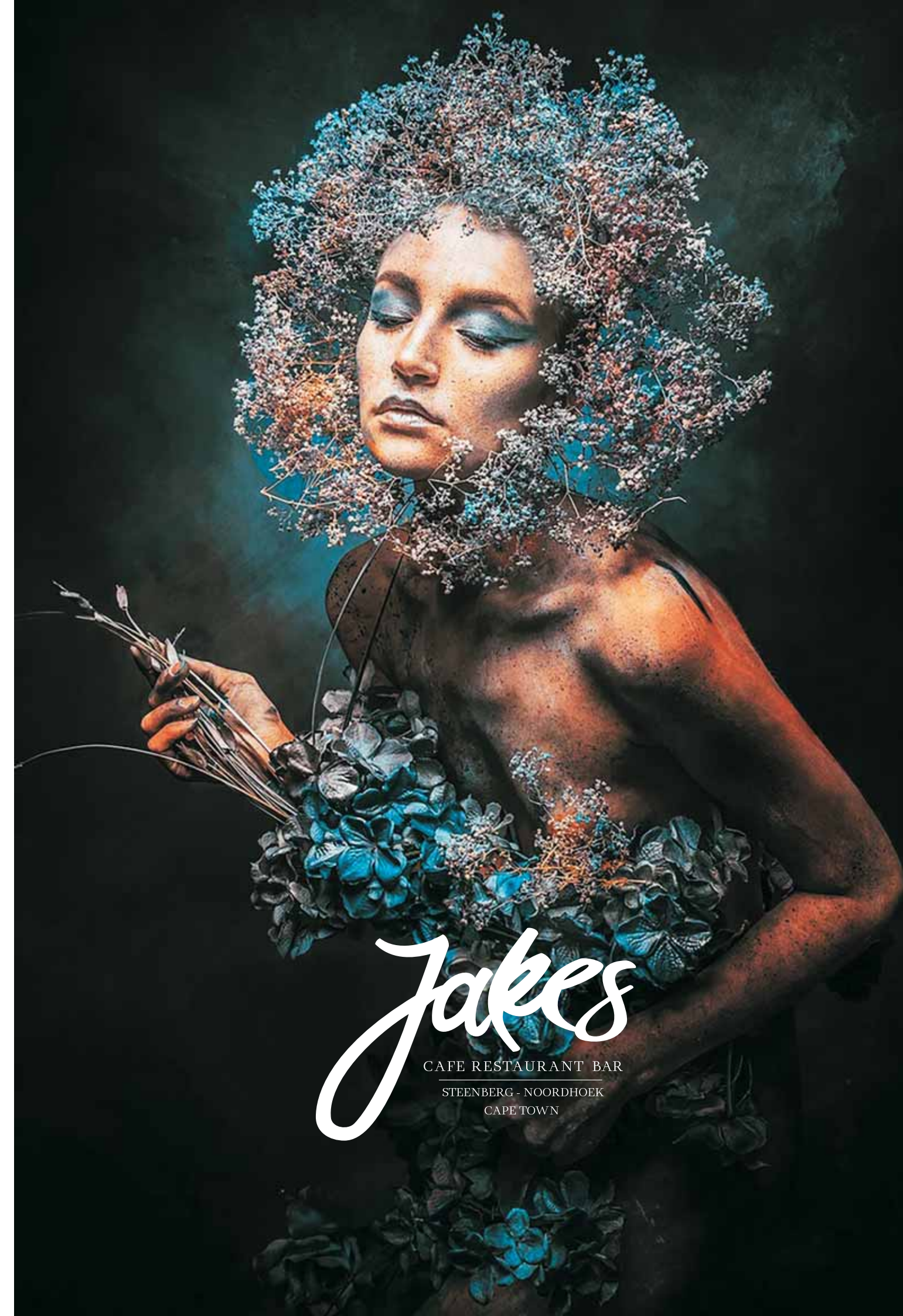
LONG ISLAND ICED TEA R75
Vodka, Rum, Cabrito 100% Agave Reposado Tequila ,
Gin, sweet & sour, Triple Sec & Coke

GIN COCKTAILS

SUGARBIRD SHRUB R75
Gin, slice of grapefruit, grapefruit syrup, loads of ice,
red peppercorns, tonic, mint & a cinnamon stick

SUGARBIRD BERRY R75
Gin, frozen berries, loads of ice, pink tonic,
simple syrup & a slice of grapefruit

SUGARBIRD ISLAND R75
Sugarbird Gin, lemon, loads of ice, strawberries,
mint syrup, mint leaves & tonic



Jakes
CAFE RESTAURANT BAR
STEENBERG - NOORDHOEK
CAPE TOWN

JAKES ON THE COMMON, NOORDHOEK, est. 2017: Tel: 021 789 0445 noordhoek@jakes.co.za
JAKES IN THE VILLAGE, TOKAI, est. 2002: Tel: 021 701 3272, tokai@jakes.co.za
www.jakes.co.za

FRENCH CHAMPAGNE

| | |
|--|-------|
| Moet Chandon NV Brut (Epernay, France) | R1200 |
| Moet Chandon Brut Imperial Ros (Epernay, France) | R1300 |

SPARKLING WINES & METHODE CLASSIQUE

| | GLASS | BOTTLE |
|--|-------|--------|
| D'Aria Popsong Sauvignon Blanc Sparkling | | R170 |
| Durbanville Hills Sparkling Rose | | R190 |
| De Luca Prosecco | R50 | R250 |
| Pongracz Brut | R65 | R340 |
| Pongracz Rose | R65 | R340 |
| Steenberg "1682" Brut | | R395 |

WHITE WINE

WHITE BLENDS AND OTHER CULTIVARS

| | GLASS | BOTTLE |
|--|-------|--------|
| Buitenverwachting Buiten blanc (Constantia) | R35 | R140 |
| Thelema Riesling (Stellenbosch) | R40 | R145 |
| Waverley Hills Pinot Grigio (Tulbagh) | | R160 |
| Brookdale Mason Road Chenin Blanc (Paarl) | | R195 |
| Mooiplaas Bushvine Chenin Blanc (Stellenbosch) | R60 | R220 |
| Springfield Albarino (Robertson) | | R265 |

SAUVIGNON BLANC

| | | |
|---|-----|------|
| Durbanville Hills Sauvignon Blanc (Durbanville) | R40 | R150 |
| Cape Point Vineyards Sauvignon Blanc (Noordhoek) | | R205 |
| Thelema Sauvignon Blanc (Stellenbosch) | R55 | R215 |
| Steenberg Sauvignon Blanc (Constantia) | | R270 |
| Diemersdal Winter Ferment Sauvignon Blanc (Durbanville) | | R350 |

CHARDONNAY

| | | |
|---|-----|------|
| Journey's End "Haystack" wooded Chardonnay (Stellenbosch) | R50 | R175 |
| Eikendal "Janina" Unwooded Chardonnay (Stellenbosch) | R55 | R185 |
| Newton Johnson Southend Chardonnay (Hemel-en-Aarde) | | R400 |

ROSE

| | | |
|---------------------------------------|-----|------|
| Quando Rose (Robertson) | R40 | R145 |
| Saronsberg Rose (Tulbagh) | | R145 |
| Eikendal Grenache Rose (Stellenbosch) | | R190 |

RED WINE

RED BLENDS AND OTHER CULTIVARS

| | GLASS | BOTTLE |
|---|-------|--------|
| Groote Post "The Old Mans Blend"(Darling) | R45 | R160 |
| Alto Rouge (Stellenbosch) | R60 | R230 |
| The Valley Pinot Noir - La Brune (Elgin) | | R250 |
| Buitenverwachting Meifort (constantia) | R65 | R255 |
| Fairview Caldera (Paarl) | | R360 |

CABERNET DAUVIGNON

| | | |
|---|-----|------|
| Anthonij Rupert "Protea" Cabernet Sauvignon (Franschhoek) | R40 | R140 |
| Le Motte Cabernet Sauvignon (Franschoek) | R75 | R290 |
| Journeys End Cabernet Sauvignon (Somerset West) | | R375 |

MERLOT

| | | |
|------------------------------------|-----|------|
| Leopard's Leap Merlot (Franschoek) | R40 | R140 |
| Anura Merlot (Stellenbosch) | | R200 |
| Groote Post Merlot (Darling) | R75 | R285 |

SHIRAZ

| | | |
|--|-----|------|
| Durbanville Hills Shiraz (Durbanville) | R45 | R160 |
| Saronsberg Provenance Shiraz (Tulbach) | | R230 |
| Lomond Syrah Shiraz (Cape Agulhas) | R75 | R285 |

PINOTAGE

| | | |
|--|-----|------|
| Diemersfontein "The Prodigy" Pinotage (Wellington) | R45 | R160 |
| Mooiplaas Pinotage (Stellenbosch) | R65 | R255 |

APERITIFS & DIGESTIVES

| | | |
|---------------------------|------|------|
| Allesverloren | 50ml | R 35 |
| Monis Medium Cream Sherry | 50ml | R 30 |
| Jagermeister | 25ml | R 35 |



Service charge not included • 10% gratuity added to tables of 8 or more • Corkage R45/bottle • NBYO wine on tables of 18 or more • fully licensed